



**October 27, 2009**  
**Editor: Bill Christensen**

## **Rotary Club of Saskatoon Nutana**

**Club No. 1380**  
**Founded May 31, 1961**

### **Club Officers**

President	Dorothy Hudson
President-Elect	Bill Christensen
Past President	Kim Horan
Vice-President	Khysar Pasha
Secretary	Jack Scott
Treasurer	Garry Schlichemeyer

### **Board of Directors**

Club Administration	Khysar Pasha
Membership	Philip Asea
Public Relations	Eileen Harvey & Dorothy Hudson
Service Projects	Bob MacGillivray
Rotary Foundation	Asit Sarkar

### **Rotary Int'l President**

John Kenny

### **District Governor**

Nancy Morris

### **Assistant Governor**

Donna Birkmaier

## **Websites**

### **Club**

[www.rotarynutana.org](http://www.rotarynutana.org)

### **District**

[www.rotary5550.org](http://www.rotary5550.org)

### **Rotary International**

[www.rotary.org](http://www.rotary.org)

## **Call to Order**

President Dorothy called the meeting to order, followed by the piano rendition of *O Canada* and *Rotary Grace* by David Kaplan. President Dorothy thanked Jack Kernan and Don Kelly for working at the desk and Kent Creelman for selling Rotary Dollars.

## **Guests**

Stan Garchinski introduced our visitors:

- guest speaker Klaus Gruber;
- Rotary Youth Exchange Student Lara Prado of Brazil;
- Dave Smith, guest of Ed Pek.

## **Program – Klaus Gruber – Helping Refugees**

Our guest speaker Klaus Gruber was introduced by Ray Bannister. Klaus is Executive Director of the Family Service Agency in Saskatoon. He has an extensive background in social work and volunteering. Klaus was born in a refugee camp in post-war Germany and came to Canada as a "displaced person" when he was eight months old. He has been involved in refugee settlement since 1979 (during the South East Asian boat people crisis).



Klaus began by distinguishing between "refugees" and "immigrants" -- while refugees are in fact immigrants, they differ from the usual immigrant, who is simply a "a person on the move." A refugee is defined as a person with a well-founded fear of persecution; they have to be at risk

and not simply poor or unemployed; and they have to be outside their country (although Canada has identified certain countries as exceptions to this rule). Canada is a co-signer of an international convention, protocol or treaty to protect people at risk; thus our country has incurred an international obligation in this regard. As well, there are people in refugee-like

situations: internally displaced people, environmental refugees, stateless people, and forced migrants.

Our speaker reviewed Canada's history with refugees. Among the highlights are the following: Hungary in 1956; Czechoslovakia in 1968; Tibetans, Ugandans and Chileans in 1971; communist Europeans, Chinese and Sri Lankans during the 1970s and 1980s; South East Asian boat people from 1979 to 1986; South and Central Americans during the 1980s; Africans during the 1990s; refugees from the former Yugoslavia in 1992 and Kosovar in 1999; Karen refugees from Myanmar in 2006.

Usually governments and agencies look at three possible solutions to refugee settlement: repatriation; integration into the country of asylum; resettlement in a third country (Canada falls into this last category). Refugees experience a number of different things during their journey: fear (of persecution, conflict, various threats, arrest and torture); flight; usually the first country of asylum is poor with limited resources to assist them; as a result, they often experience some limitation on their rights (to go to school, to work, etc.). Sometimes they resort to deceit and forged documents out of necessity (since they often are forced to flee at the last moment with little documentation).

Philip Asea thanked Klaus on the club's behalf.



### **Rotary Youth Exchange Student**

President Dorothy introduced Lara Prado of Brazil, who is being hosted by the Rotary Club of Saskatoon North. Lara described her first impressions of Saskatoon, which included getting lost while bicycling on Circle Drive. Her counselor is Joanne Harpauer Digneau and she is now being hosted by Wayne and Joan Janzen.

### **Announcements**

- **Dorothy Hudson** – The price for our meal will increase by \$1, effective November 1.
- **Dorothy Hudson** – The club donated \$4,800 to the Shelter Box program at the Shelterbox Gala.
- **Dorothy Hudson** - The five city clubs are looking for a volunteer to coordinate the production of next year's roster.
- **Bob MacGillivray** – A reminder that our regular Tuesday luncheon on November 10 will be cancelled so that we can attend an evening program of wildlife photography by Bob's brother, Garfield. Tickets are \$30 each. The event will be held in the Cedar Room at the Park Town Hotel, with reception at 6:15 p.m. and dinner at 7. This will be a great show so you may want to bring family and friends. Proceeds will support upgrades to the Beaver Creek Conservation area.
- **Lorne Braithwaite** – Our club will be staffing the Salvation Army Christmas Kettles on November 21, December 4 and December 11. Lorne distributed a signup sheet.

## Sergeant at Arms

Rick Lee extracted happy and sad dollars from a number of people (including Stan, Winston, and Ray. Ray was also sad along with Norm.

**Draw** – Won by Bryan Tastad

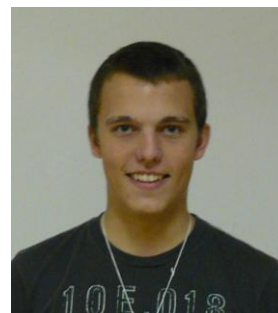
## Program Calendar November 2009 Theme: The Rotary Foundation

**Program Chair: Ed Pek**

Date	Attendance Desk	Greeter	Rotana Editor	Sgt-at-Arms	Speaker/Topic	Intro	Club Thanks
<b>Nov 3</b>	Jim McCartan/ Jack Scott	Kim Horan	Bill Christensen	Asit Sarkar	Harold Empey <i>Rotary Foundation</i>	Ed Pek	Asit Sarkar
<b>Nov 4</b>	Meals on Wheels Driver – Kent Creelman						
<b>Nov 5</b>	Meals on Wheels Driver – Harold Haid						
<b>Nov 10</b>	TBA	Winston Gokavi	Jack Scott	NA	Garfield MacGillivray <i>Wildlife Photography</i> 6:15 p.m. at Parktown Hotel	NA	NA
<b>Nov 11</b>	Meals on Wheels Driver – No Meals on wheels due to Remembrance Day						
<b>Nov 12</b>	Meals on Wheels Driver – Betty Ann Arscott						
<b>Nov 17</b>	TBA	Bill Christensen	Jack Scott	Rick Lee	Bill Johnson <i>Potash Corp</i>	Ed Pek	Keith Downey
<b>Nov 18</b>	Meals on Wheels Driver – Driver Needed						
<b>Nov 19</b>	Meals on Wheels Driver – Driver Needed						
<b>Nov 24</b>	Jim McCartan/ Jack Scott	Steve Pek	Norm Woodcock	Asit Sarkar	Al Richards <i>Areva</i>	Steve Pek	Joe Dierker
<b>Nov 25</b>	Meals on Wheels Driver – Driver Needed						
<b>Nov 26</b>	Meals on Wheels Driver – Driver Needed						



**Lara Prado**  
**Brazil**  
Now at the home  
of Wayne Janzen



**César Janssens**  
**Belgium**  
Now at the home  
of John Benesh

## **Should dogs be allowed in Rotary Park?**

An issue has arisen regarding whether dogs should be allowed in City parks. A few parks have already prohibited pets, Rotary Park included. Concerns are cleanliness, safety, environmental impact and maintenance. If dogs were allowed this would increase maintenance costs. There are presently 6 off leash parks available for dog owners. City is considering 2 options. Keep the prohibition or change the bylaw. City would like feedback from citizens and partners before Christmas. A PowerPoint presentation on the issue is available on the City website and they welcome our feedback. If you would like to comment, please go to the city website and forward your comments to them.